



Newnes Kaolin Sandmine

Environmental Monitoring Data

**September - December
2018**

ML 1654

Lot 7005 DP 1020664

Sandham Rd, Newnes Junction

Project Website: www.sydneyconstructionmaterials.com.au

ADDRESS Unit 2, 16 Donald Street, Lithgow N.S.W, Australia 2790

PHONE +61 2 6350 7400 | FAX +61 2 6352 3583

ACIRL PTY LTD ABN 41 000 513 888 Part of the ALS Laboratory Group A Campbell Brothers Limited Company

www.alsglobal.com

RIGHT SOLUTIONS RIGHT PARTNER

TABLE OF CONTENTS

1. INTRODUCTION 1

2. SCOPE OF WORK 1

3. AIR QUALITY MONITORING 2

4. WATER QUALITY 4

5. DATA LOGGERS 6

TABLES

Table 1. Supporting Information for Monitoring Points 1

Table 2. Depositional Dust Monitoring Results 2

Table 3 Summary of the Monitoring Field Analysis for the Reporting Period 4

Table 4 Summary of the Divers loggers downloaded data for the Reporting Period 23

GRAPHS

GRAPH 1. Depositional Dust Monitoring Results- 2018 3

GRAPH 2. Water Monitoring Results- 2018 4

1. INTRODUCTION

ALS Coal is engaged by Newnes Kaolin to undertake monthly monitoring event at THE Newnes Kaolin Sandmine Sandham Road, Newnes Junction. Sampling dates stated on Table 1 with results of the monitoring included within this report and relevant laboratory results appended.

Table 1. Supporting Information for Monitoring Points.

Location and Parameter	Monitoring Frequency	Unit of Measure	Parameters	Sampling Date
Depositional Dust DG 1	Monthly	g/m2/month		29/11/18 - 04/01/2019
Depositional Dust DG 2	Monthly	g/m2/month		29/11/18 - 04/01/2019
Depositional Dust DG 3	Monthly	g/m2/month		29/11/18 - 04/01/2019
SW-1	Bi- Annual	mg/L	pH, EC, Temperature, TSS, BOD, TOG, Iron Dissolved, Manganese Dissolved	18/09/2018
SW-2	Bi- Annual	mg/L		18/09/2018
GW1A	Quarterly & Bi- Annual	mg/L	pH, EC, Temperature, TSS, TDS, bore water level, download data, Nitrate, Nitrite, Total Phosphorous, Ammonia, Total Phenolic, Alkalinity, Chloride, Sulphate, Fluoride, Calcium, Magnesium, Sodium, Potassium, Iron Dissolved, Manganese Dissolved	7/12/2018
GW1B	Quarterly & Bi- Annual	mg/L		7/12/2018
GW2A	Quarterly & Bi- Annual	mg/L		7/12/2018
GW2B	Quarterly & Bi- Annual	mg/L		7/12/2018
GW3A	Quarterly & Bi- Annual	mg/L		7/12/2018
GW3B	Quarterly & Bi- Annual	mg/L		7/12/2018

2. Scope of Work

ALS Coal was engaged to:

- Sampled and Analyze depositional dust at DG1, DG2, and DG 3 monthly
- Sample and Analyze groundwater and surface waters Quarterly and Bi- Annually for subsequent water quality report;
- Obtain laboratory analysis on the groundwater samples for pH, EC, Temperature, TSS, TDS, Bore Water Level, Download Data, Nitrate, Nitrite, Total Phosphorous, Ammonia, Total Phenolic, Alkalinity, Chloride, Sulphate, Fluoride, Calcium, Magnesium, Sodium, Potassium, Iron Dissolved, Manganese Dissolved
- Obtain laboratory analysis on the surface samples for pH, EC, Temperature, TSS, BOD, TOG, Iron Dissolved & Manganese Dissolved.
- Compare laboratory results data against previous sampling data

3. AIR QUALITY MONITORING

The air quality monitoring results for the reporting period are summarized below.

3.1 Depositional Dust

Depositional dust results (deposited matter recorded as insoluble solids) for September, October, November and December are shown in Table 2.

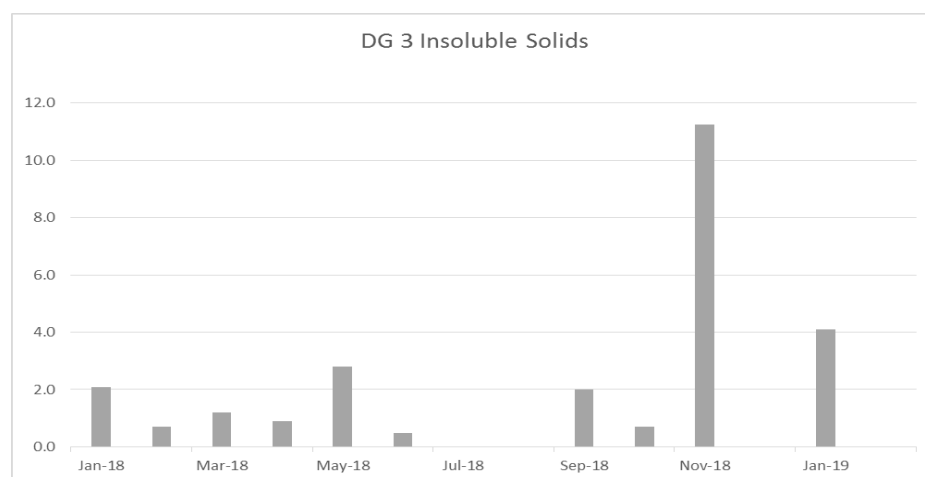
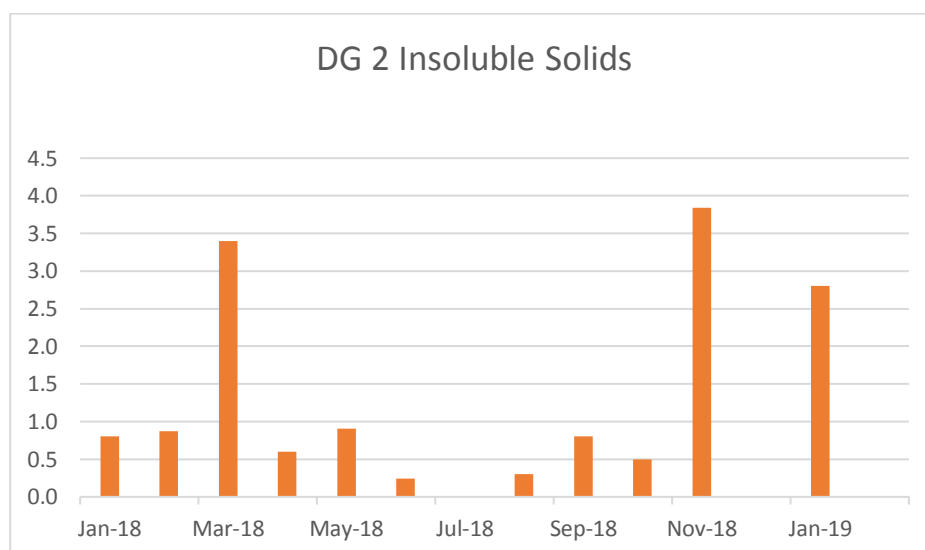
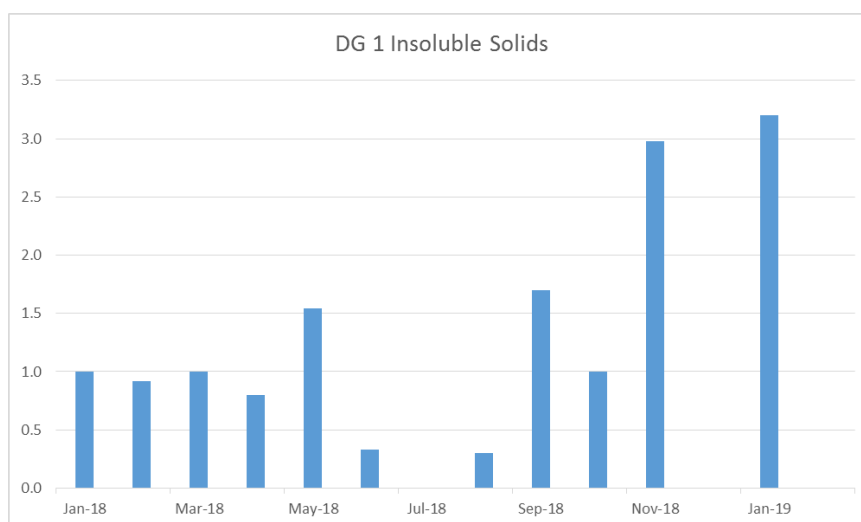
Sampling is conducted in accordance with "Methods for sampling and analysis of ambient air. Method 10.1: Determination of particulate matter - Deposited matter-Gravimetric method" Standards Australia, 2003 (Australian Standard 3580.10.1.2003).

Table 2. Depositional Dust Monitoring Results

Date Collected	Insoluble Solids (g/m ² .month)		
	DG 1	DG 2	DG 3
8/01/2018	1.0	0.8	2.1
9/02/2018	0.9	0.9	0.7
9/03/2018	1	3.4	1.2
10/04/2018	0.8	0.6	0.9
11/05/2018	1.54	0.91	2.79
8/06/2018	0.3	0.2	0.5
6/07/2018	<0.1	<0.1	<0.1
3/08/2018	0.3	0.3	
4/09/2018	1.7	0.8	2
4/10/2018	1	0.5	0.7
1/11/2018			0.2
29/11/2018	3.0	3.8	11.2
4/01/2019	3.2	2.8	4.1
Rolling average	1.3	1.4	2.4

There is not a depositional dust limit; however, a rolling average air quality criterion of 4 g/m²/month is commonly used for comparison purposes

Graph 1. Depositional Dust Monitoring Results- 2018



DG 1 and DG 2 sample was lost in the field on the 1st of November. All dust gauges are within the rolling average of 4 g/m²/month for the month of November 2018

4. WATER QUALITY

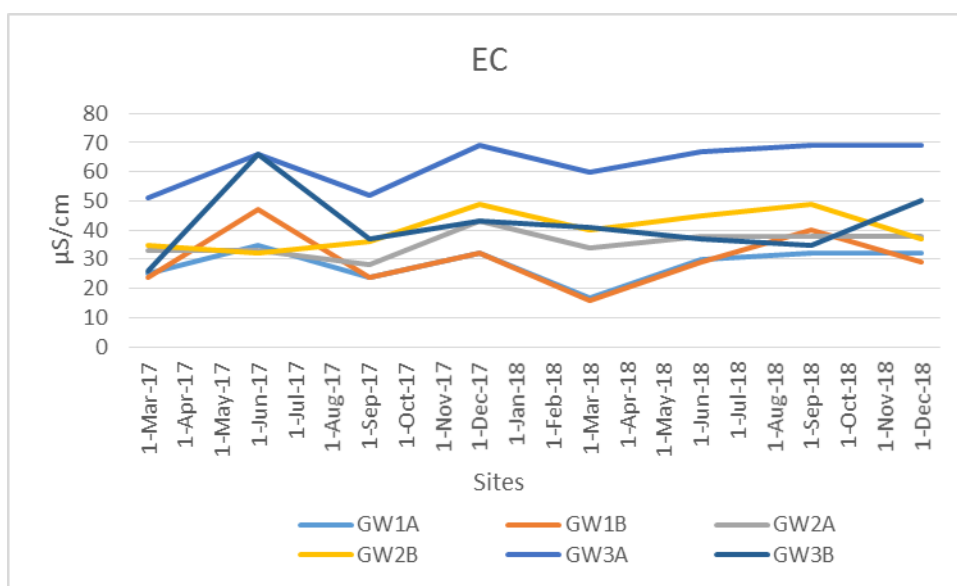
As indicated on **Table 1. Supporting Information for Monitoring Points** monitoring is conducted Quarterly and Bi Annual as per the agreement with ALS Coal Division Lithgow.

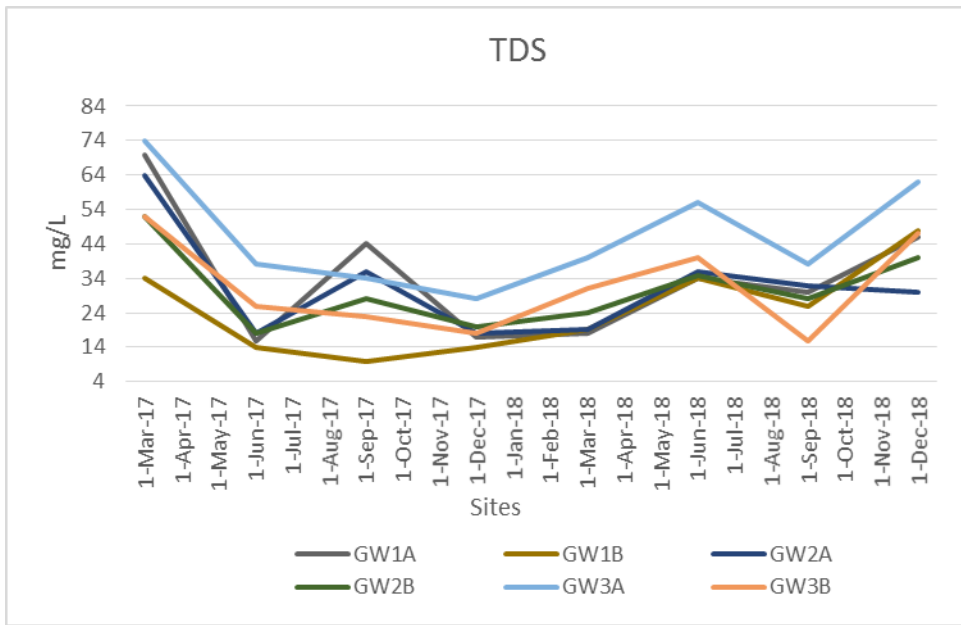
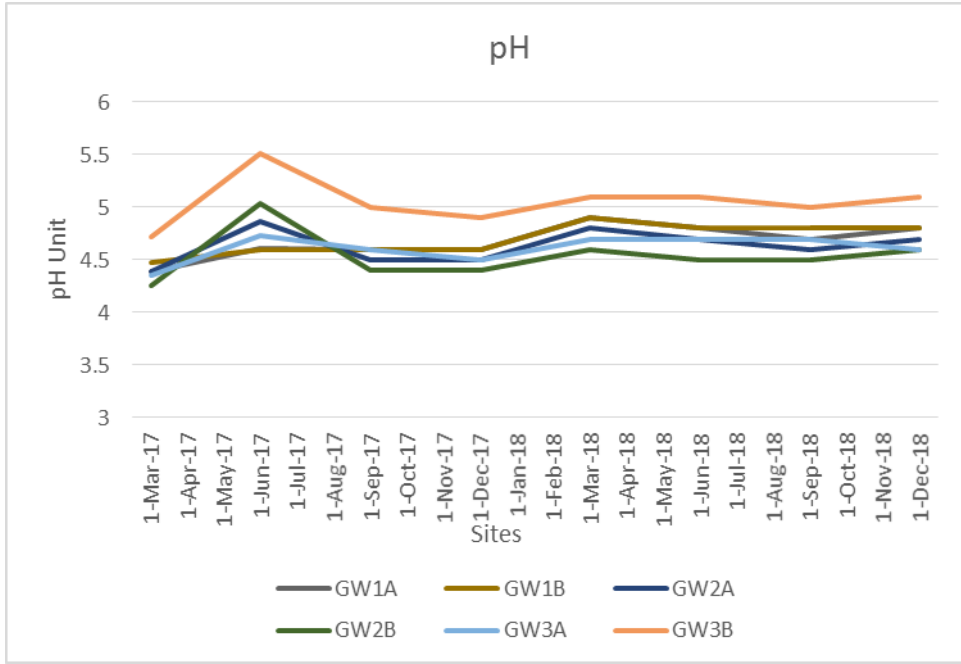
Table 3 Summary of the Monitoring Field Analysis for the Reporting Period.

Sample ID	Date of Sample	Temp	Ec	pH	TSS	TDS	Water Height	Appearance
		°C	µS/cm	pH Units	mg/L	mg/L	m	
GW1A	7-Dec-18	12.4	32	4.8		46	12.54	Clear
GW1B	7-Dec-18	12.7	29	4.8		48	10.46	Cloudy
GW2A	7-Dec-18	14	38	4.7		30	41.88	Clear
GW2B	7-Dec-18	12.9	37	4.6		40	13.79	Clear
GW3A	7-Dec-18	12.3	69	4.6		62	14.32	Clear
GW3B	7-Dec-18	11.5	50	5.1		47	13.58	Clear
SW1	18-Sep-18							Dry
SW2	18-Sep-18	10.4	37	5.4	<5			Clear

All site parameters tested for continue to remain constants with slight variations since sampling started on the 14TH of March, 2017.

Graph 2. Water Monitoring Results- 2018





5. Data loggers

The diver loggers monitoring results for the reporting period are summarized below.

NEWNES DIVERS LOGGERS

Monthly Results

NW 17.5- GW1B

Date	Temp Average	Depth (cm) Average	Pressure (mBar) Average
1-Sep-18	13.9	911.0	892.5
2-Sep-18	13.9	919.1	900.4
3-Sep-18	13.9	925.4	906.6
4-Sep-18	13.9	927.2	908.3
5-Sep-18	13.9	924.6	905.8
6-Sep-18	13.9	919.4	900.8
7-Sep-18	13.9	916.1	897.5
8-Sep-18	13.8	917.6	898.9
9-Sep-18	13.8	920.6	901.9
10-Sep-18	13.8	925.3	906.5
11-Sep-18	13.8	921.8	903.1
12-Sep-18	13.8	918.8	900.1
13-Sep-18	13.8	920.5	901.8
14-Sep-18	13.8	919.3	900.6
15-Sep-18	13.8	912.3	893.8
16-Sep-18	13.8	918.9	900.2
17-Sep-18	13.7	922.6	903.8
18-Sep-18	14.7	918.1	899.5
19-Sep-18	13.7	913.9	895.3
20-Sep-18	13.7	920.3	901.6
21-Sep-18	13.7	926.7	907.8
22-Sep-18	13.7	926.7	907.9
23-Sep-18	13.7	926.0	907.2
24-Sep-18	13.7	927.8	908.9
25-Sep-18	13.7	925.2	906.4
26-Sep-18	13.6	922.0	903.2
27-Sep-18	13.6	920.4	901.7
28-Sep-18	13.6	918.4	899.8
29-Sep-18	13.6	922.3	903.5
30-Sep-18	13.6	928.6	909.8
Minimum	13.6	911.0	892.5
Maximum	14.7	928.6	909.8

NEWNES DIVERS LOGGERS

Monthly Results

NW 17.5- GW1B

Date	Temp Average	Depth (cm) Average	Pressure (mBar) Average
1-Oct-18	13.6	928.1	909.3
2-Oct-18	13.6	926.4	907.5
3-Oct-18	13.6	920.8	902.1
4-Oct-18	13.6	919.0	900.4
5-Oct-18	13.6	922.6	903.8
6-Oct-18	13.6	923.5	904.7
7-Oct-18	13.9	916.1	897.5
8-Oct-18	13.6	920.2	901.5
9-Oct-18	13.5	917.7	899.1
10-Oct-18	13.5	918.4	899.7
11-Oct-18	13.5	923.0	904.2
12-Oct-18	13.5	925.5	906.7
13-Oct-18	13.5	925.3	906.5
14-Oct-18	13.5	926.3	907.4
15-Oct-18	13.5	926.4	907.6
16-Oct-18	13.5	923.8	905.1
17-Oct-18	13.5	920.3	901.6
18-Oct-18	13.5	919.2	900.6
19-Oct-18	13.5	920.0	901.7
20-Oct-18	13.5	918.1	899.4
21-Oct-18	13.5	917.9	899.2
22-Oct-18	13.5	919.3	900.6
23-Oct-18	13.5	918.4	899.7
24-Oct-18	13.5	920.5	901.8
25-Oct-18	13.5	921.3	902.6
26-Oct-18	13.4	918.3	899.6
27-Oct-18	13.4	916.2	897.6
28-Oct-18	13.4	917.8	899.1
29-Oct-18	13.4	919.4	900.7
30-Oct-18	13.4	921.1	902.4
31-Oct-18	13.4	921.9	903.2
Minimum	13.4	916.1	897.5
Maximum	13.9	928.1	909.3

NEWNES DIVERS LOGGERS

Monthly Results

NW 17.5- GW1B

Date	Temp Average	Depth (cm) Average	Pressure (mBar) Average
1-Nov-18	13.4	924.2	905.4
2-Nov-18	13.4	921.5	902.7
3-Nov-18	13.4	918.1	899.4
4-Nov-18	13.4	917.7	899.1
5-Nov-18	13.4	915.7	897.1
6-Nov-18	13.4	913.9	895.4
7-Nov-18	13.9	916.1	897.5
8-Nov-18	13.4	916.0	897.4
9-Nov-18	13.4	921.4	902.7
10-Nov-18	13.4	920.5	901.8
11-Nov-18	13.4	922.4	903.7
12-Nov-18	13.4	924.2	905.5
13-Nov-18	13.4	921.6	902.9
14-Nov-18	13.4	919.5	900.8
15-Nov-18	13.4	921.0	902.3
16-Nov-18	13.4	922.4	903.7
17-Nov-18	13.4	921.4	902.7
18-Nov-18	13.4	924.3	905.5
19-Nov-18	13.4	922.1	903.4
20-Nov-18	13.4	916.4	897.8
21-Nov-18	13.4	908.0	889.5
22-Nov-18	13.4	904.1	885.7
23-Nov-18	13.4	905.4	887.0
24-Nov-18	13.4	906.6	888.2
25-Nov-18	13.4	905.8	887.4
26-Nov-18	13.4	908.5	890.0
27-Nov-18	13.4	909.8	891.3
28-Nov-18	13.4	905.1	886.7
29-Nov-18	13.4	912.0	893.4
30-Nov-18	13.4	914.3	895.7
Minimum	13.4	904.1	885.7
Maximum	13.9	924.3	905.5

NEWNES DIVERS LOGGERS

Monthly Results

NE 17.5- GW2B

Date	Temp Average	Depth (cm) Average	Pressure (mBar) Average
1-Sep-18	13.9	1353.7	1326.2
2-Sep-18	13.9	1353.8	1326.3
3-Sep-18	13.9	1355.0	1327.4
4-Sep-18	13.9	1356.6	1329.0
5-Sep-18	13.9	1357.7	1330.1
6-Sep-18	13.9	1357.4	1329.8
7-Sep-18	13.9	916.1	897.5
8-Sep-18	13.9	1355.9	1328.3
9-Sep-18	13.9	1356.1	1328.5
10-Sep-18	13.9	1356.6	1329.0
11-Sep-18	13.9	1356.8	1329.3
12-Sep-18	13.9	1356.3	1328.7
13-Sep-18	13.9	1355.8	1328.2
14-Sep-18	13.9	1355.1	1327.6
15-Sep-18	13.9	1353.7	1326.2
16-Sep-18	13.9	1353.7	1326.2
17-Sep-18	13.9	1354.0	1326.5
18-Sep-18	17.7	1238.4	1213.3
19-Sep-18	13.9	1331.9	1304.9
20-Sep-18	13.9	1339.8	1312.6
21-Sep-18	13.9	1344.9	1317.5
22-Sep-18	13.9	1349.5	1322.1
23-Sep-18	13.9	1352.6	1325.1
24-Sep-18	13.9	1355.6	1328.0
25-Sep-18	13.9	1356.1	1328.6
26-Sep-18	13.9	1355.8	1328.3
27-Sep-18	13.9	1355.5	1327.9
28-Sep-18	13.9	1354.5	1326.9
29-Sep-18	13.9	1353.9	1326.4
30-Sep-18	13.9	1355.0	1327.5
Minimum	13.9	916.1	897.5
Maximum	17.7	1357.7	1330.1

NEWNES DIVERS LOGGERS

Monthly Results

NE 17.5- GW2B

Date	Temp Average	Depth (cm) Average	Pressure (mBar) Average
1-Oct-18	13.9	1355.4	1327.9
2-Oct-18	13.9	1355.6	1328.0
3-Oct-18	13.9	1355.0	1327.5
4-Oct-18	13.9	1353.7	1326.2
5-Oct-18	13.9	1353.9	1326.4
6-Oct-18	13.9	1354.1	1326.6
7-Oct-18	13.9	916.1	897.5
8-Oct-18	13.8	1352.9	1325.4
9-Oct-18	13.9	1352.0	1324.5
10-Oct-18	13.9	1351.1	1323.6
11-Oct-18	13.8	1351.7	1324.2
12-Oct-18	13.8	1352.4	1324.9
13-Oct-18	13.8	1353.5	1326.0
14-Oct-18	13.8	1354.3	1326.8
15-Oct-18	13.8	1354.6	1327.1
16-Oct-18	13.8	1354.4	1326.9
17-Oct-18	13.8	1354.2	1326.7
18-Oct-18	13.8	1354.0	1326.5
19-Oct-18	13.8	1353.4	1325.9
20-Oct-18	13.8	1352.9	1325.4
21-Oct-18	13.8	1352.3	1324.8
22-Oct-18	13.8	1351.6	1324.2
23-Oct-18	13.8	1351.0	1323.5
24-Oct-18	13.8	1351.2	1323.8
25-Oct-18	13.8	1351.3	1323.8
26-Oct-18	13.8	1350.7	1323.3
27-Oct-18	13.8	1349.8	1322.4
28-Oct-18	13.8	1349.6	1322.2
29-Oct-18	13.8	1349.7	1322.3
30-Oct-18	13.8	1349.7	1322.2
31-Oct-18	13.8	1349.9	1322.5
Minimum	13.8	916.1	897.5
Maximum	13.9	1355.6	1328.0

NEWNES DIVERS LOGGERS

Monthly Results

NE 17.5- GW2B

Date	Temp Average	Depth (cm) Average	Pressure (mBar) Average
1-Nov-18	13.7	1350.6	1323.1
2-Nov-18	13.8	1350.3	1322.9
3-Nov-18	13.8	1349.6	1322.2
4-Nov-18	13.8	1349.2	1321.8
5-Nov-18	13.8	1348.4	1321.0
6-Nov-18	13.8	1347.2	1319.8
7-Nov-18	13.9	916.1	897.5
8-Nov-18	13.8	1345.6	1318.3
9-Nov-18	13.7	1346.2	1318.8
10-Nov-18	13.8	1346.6	1319.2
11-Nov-18	13.7	1347.0	1319.7
12-Nov-18	13.8	1347.6	1320.2
13-Nov-18	13.7	1347.2	1319.9
14-Nov-18	13.7	1346.7	1319.4
15-Nov-18	13.7	1346.6	1319.2
16-Nov-18	13.7	1346.4	1319.0
17-Nov-18	13.7	1346.6	1319.2
18-Nov-18	13.7	1346.9	1319.5
19-Nov-18	13.7	1346.7	1319.3
20-Nov-18	13.7	1345.1	1317.7
21-Nov-18	13.7	1342.7	1315.4
22-Nov-18	13.7	1340.1	1312.8
23-Nov-18	13.7	1337.9	1310.7
24-Nov-18	13.7	1336.5	1309.4
25-Nov-18	13.7	1335.3	1308.2
26-Nov-18	13.7	1334.4	1307.3
27-Nov-18	13.7	1333.6	1306.5
28-Nov-18	13.7	1332.2	1305.1
29-Nov-18	13.7	1333.0	1306.0
30-Nov-18	13.7	1334.0	1306.9
Minimum	13.7	916.1	897.5
Maximum	13.9	1350.6	1323.1

NEWNES DIVERS LOGGERS

Monthly Results

NW 60- GW1A

Date	Pressure (cm) Average	Temperature (C) Average
1-Sep-18	1154.1	14.6
2-Sep-18	1156.0	14.6
3-Sep-18	1157.6	14.5
4-Sep-18	1158.1	14.5
5-Sep-18	1156.8	14.5
6-Sep-18	1154.3	14.5
7-Sep-18	1152.4	14.5
8-Sep-18	1152.1	14.5
9-Sep-18	1152.6	14.5
10-Sep-18	1153.6	14.5
11-Sep-18	1151.8	14.5
12-Sep-18	1149.7	14.5
13-Sep-18	1149.8	14.5
14-Sep-18	1149.0	14.5
15-Sep-18	1145.3	14.5
16-Sep-18	1146.4	14.5
17-Sep-18	1147.4	14.5
18-Sep-18	1142.1	14.5
19-Sep-18	1140.3	14.5
20-Sep-18	1142.2	14.4
21-Sep-18	1144.1	14.4
22-Sep-18	1143.9	14.4
23-Sep-18	1143.0	14.4
24-Sep-18	1143.6	14.4
25-Sep-18	1142.1	14.4
26-Sep-18	1140.6	14.4
27-Sep-18	1139.4	14.4
28-Sep-18	1137.7	14.4
29-Sep-18	1137.7	14.4
30-Sep-18	1139.6	14.4
Minimum	1137.7	14.4
Maximum	1158.1	14.6

NEWNES DIVERS LOGGERS

Monthly Results

NW 60- GW1A

Date	Pressure (cm) Average	Temperature (C) Average
01-Oct-18	1138.8	14.4
02-Oct-18	1137.9	14.4
03-Oct-18	1135.0	14.4
04-Oct-18	1133.8	14.4
05-Oct-18	1135.5	14.4
06-Oct-18	1135.1	14.3
07-Oct-18	1134.0	14.3
08-Oct-18	1132.5	14.3
09-Oct-18	1130.9	14.3
10-Oct-18	1131.6	14.3
11-Oct-18	1133.0	14.3
12-Oct-18	1132.9	14.3
13-Oct-18	1132.6	14.3
14-Oct-18	1133.1	14.3
15-Oct-18	1133.1	14.3
16-Oct-18	1132.4	14.3
17-Oct-18	1131.8	14.3
18-Oct-18	1132.2	14.3
19-Oct-18	1132.6	14.3
20-Oct-18	1131.4	14.3
21-Oct-18	1132.4	14.3
22-Oct-18	1133.2	14.3
23-Oct-18	1133.0	14.2
24-Oct-18	1134.4	14.2
25-Oct-18	1134.2	14.2
26-Oct-18	1133.4	14.2
27-Oct-18	1132.4	14.2
28-Oct-18	1133.1	14.2
29-Oct-18	1133.5	14.2
30-Oct-18	1133.8	14.2
31-Oct-18	1134.1	14.2
Minimum	1130.9	14.2
Maximum	1138.8	14.4

NEWNES DIVERS LOGGERS

Monthly Results

NW 60- GW1A

Date	Pressure (cm) Average	Temperature (C) Average
1-Nov-18	1134.5	14.2
2-Nov-18	1133.4	14.2
3-Nov-18	1132.9	14.2
4-Nov-18	1132.5	14.2
5-Nov-18	1131.8	14.2
6-Nov-18	1130.7	14.2
7-Nov-18	1129.4	14.2
8-Nov-18	1131.6	14.2
9-Nov-18	1132.3	14.2
10-Nov-18	1131.7	14.2
11-Nov-18	1132.2	14.2
12-Nov-18	1132.7	14.2
13-Nov-18	1131.6	14.2
14-Nov-18	1131.0	14.1
15-Nov-18	1131.8	14.1
16-Nov-18	1131.5	14.1
17-Nov-18	1131.1	14.1
18-Nov-18	1131.9	14.1
19-Nov-18	1130.7	14.1
20-Nov-18	1128.1	14.1
21-Nov-18	1125.3	14.1
22-Nov-18	1124.3	14.1
23-Nov-18	1124.6	14.1
24-Nov-18	1124.5	14.1
25-Nov-18	1123.6	14.1
26-Nov-18	1124.2	14.1
27-Nov-18	1123.6	14.1
28-Nov-18	1122.8	14.1
29-Nov-18	1126.6	14.1
30-Nov-18	1126.6	14.1
Minimum	1122.8	14.1
Maximum	1134.5	14.2

NEWNES DIVERS LOGGERS

Monthly Results

S 17.5 B- GW3B

Date	Pressure (cm) Average	Temperature (C) Average
1-Sep-18	1049.2	14.1
2-Sep-18	1048.3	14.1
3-Sep-18	1047.6	14.1
4-Sep-18	1046.9	14.1
5-Sep-18	1046.2	14.1
6-Sep-18	1045.2	14.1
7-Sep-18	1044.4	14.1
8-Sep-18	1043.6	14.1
9-Sep-18	1042.8	14.1
10-Sep-18	1042.1	14.1
11-Sep-18	1041.2	14.1
12-Sep-18	1040.1	14.1
13-Sep-18	1039.5	14.1
14-Sep-18	1038.8	14.1
15-Sep-18	1037.7	14.0
16-Sep-18	1036.7	14.0
17-Sep-18	1035.7	14.0
18-Sep-18	1069.2	14.0
19-Sep-18	1104.6	14.0
20-Sep-18	1104.1	14.0
21-Sep-18	1103.2	14.0
22-Sep-18	1102.8	14.0
23-Sep-18	1102.1	14.0
24-Sep-18	1101.3	14.0
25-Sep-18	1100.8	14.0
26-Sep-18	1100.1	14.0
27-Sep-18	1099.4	14.0
28-Sep-18	1098.5	14.0
29-Sep-18	1097.6	14.0
30-Sep-18	1097.1	14.0
Minimum	1035.7	14.0
Maximum	1104.6	14.1

NEWNES DIVERS LOGGERS

Monthly Results

S 17.5 B- GW3B

Date	Pressure (cm) Average	Temperature (C) Average
1-Oct-18	1096.6	14.0
2-Oct-18	1095.8	14.0
3-Oct-18	1095.0	14.0
4-Oct-18	1094.1	13.9
5-Oct-18	1093.3	13.9
6-Oct-18	1092.5	13.9
7-Oct-18	1091.6	13.9
8-Oct-18	1090.8	13.9
9-Oct-18	1089.8	13.9
10-Oct-18	1088.8	13.9
11-Oct-18	1087.8	13.9
12-Oct-18	1087.1	13.9
13-Oct-18	1086.4	13.9
14-Oct-18	1085.5	13.9
15-Oct-18	1084.8	13.9
16-Oct-18	1084.1	13.9
17-Oct-18	1083.0	13.9
18-Oct-18	1082.3	13.9
19-Oct-18	1081.7	13.9
20-Oct-18	1080.6	13.9
21-Oct-18	1079.9	13.9
22-Oct-18	1079.2	13.9
23-Oct-18	1078.0	13.8
24-Oct-18	1077.1	13.8
25-Oct-18	1076.4	13.8
26-Oct-18	1075.4	13.8
27-Oct-18	1074.4	13.8
28-Oct-18	1073.7	13.8
29-Oct-18	1073.0	13.8
30-Oct-18	1072.1	13.8
31-Oct-18	1071.4	13.8
Minimum	1071.4	13.8
Maximum	1096.6	14.0

NEWNES DIVERS LOGGERS

Monthly Results

S 17.5 B- GW3B

Date	Pressure (cm) Average	Temperature (C) Average
1-Nov-18	1070.7	13.8
2-Nov-18	1070.3	13.8
3-Nov-18	1069.2	13.8
4-Nov-18	1068.5	13.8
5-Nov-18	1067.7	13.8
6-Nov-18	1067.0	13.8
7-Nov-18	1066.1	13.8
8-Nov-18	1065.0	13.8
9-Nov-18	1064.3	13.8
10-Nov-18	1063.8	13.8
11-Nov-18	1063.0	13.7
12-Nov-18	1062.4	13.7
13-Nov-18	1061.5	13.7
14-Nov-18	1061.1	13.7
15-Nov-18	1060.4	13.7
16-Nov-18	1059.7	13.7
17-Nov-18	1059.0	13.7
18-Nov-18	1058.7	13.7
19-Nov-18	1058.2	13.7
20-Nov-18	1057.2	13.7
21-Nov-18	1056.2	13.7
22-Nov-18	1055.3	13.7
23-Nov-18	1054.2	13.7
24-Nov-18	1053.1	13.7
25-Nov-18	1051.9	13.7
26-Nov-18	1050.7	13.7
27-Nov-18	1049.4	13.7
28-Nov-18	1048.3	13.7
29-Nov-18	1047.4	13.7
30-Nov-18	1046.4	13.7
Minimum	1046.4	13.7
Maximum	1070.7	13.8

NEWNES DIVERS LOGGERS

Monthly Results

S 54- GW3A

Date	Pressure (cm) Average	Temperature (C) Average
1-Sep-18	978.6	14.0
2-Sep-18	978.8	14.0
3-Sep-18	979.1	14.0
4-Sep-18	978.6	14.0
5-Sep-18	977.3	14.0
6-Sep-18	975.5	14.0
7-Sep-18	974.1	14.0
8-Sep-18	973.5	14.0
9-Sep-18	973.0	14.0
10-Sep-18	973.2	14.0
11-Sep-18	971.2	14.0
12-Sep-18	969.3	14.0
13-Sep-18	969.2	14.0
14-Sep-18	967.7	14.0
15-Sep-18	965.5	14.0
16-Sep-18	965.5	14.0
17-Sep-18	965.2	14.0
18-Sep-18	965.2	14.0
19-Sep-18	969.0	14.0
20-Sep-18	969.9	14.0
21-Sep-18	970.3	14.0
22-Sep-18	969.6	14.0
23-Sep-18	968.9	13.9
24-Sep-18	968.8	13.9
25-Sep-18	967.1	13.9
26-Sep-18	966.2	13.9
27-Sep-18	965.0	13.9
28-Sep-18	963.4	13.9
29-Sep-18	963.4	13.9
30-Sep-18	964.0	13.9
Minimum	963.4	13.9
Maximum	979.1	14.0

NEWNES DIVERS LOGGERS

Monthly Results

S 54- GW3A

Date	Pressure (cm) Average	Temperature (C) Average
1-Oct-18	963.0	13.9
2-Oct-18	961.8	13.9
3-Oct-18	959.9	13.9
4-Oct-18	959.2	13.9
5-Oct-18	959.4	13.9
6-Oct-18	958.1	13.9
7-Oct-18	956.8	13.9
8-Oct-18	955.6	13.9
9-Oct-18	956.3	13.9
10-Oct-18	954.7	13.9
11-Oct-18	954.3	13.8
12-Oct-18	954.2	13.8
13-Oct-18	953.5	13.8
14-Oct-18	953.5	13.8
15-Oct-18	952.5	13.8
16-Oct-18	951.3	13.8
17-Oct-18	949.9	13.8
18-Oct-18	948.8	13.8
19-Oct-18	947.0	13.8
20-Oct-18	945.9	13.8
21-Oct-18	945.3	13.8
22-Oct-18	944.2	13.8
23-Oct-18	943.2	13.8
24-Oct-18	943.3	13.8
25-Oct-18	942.3	13.8
26-Oct-18	941.1	13.8
27-Oct-18	939.5	13.8
28-Oct-18	939.8	13.8
29-Oct-18	939.0	13.7
30-Oct-18	938.6	13.7
31-Oct-18	938.2	13.7
Minimum	938.2	13.7
Maximum	963.0	13.9

NEWNES DIVERS LOGGERS

Monthly Results

S 54- GW3A

Date	Pressure (cm) Average	Temperature (C) Average
1-Nov-18	937.9	13.7
2-Nov-18	936.2	13.7
3-Nov-18	935.4	13.7
4-Nov-18	934.3	13.7
5-Nov-18	933.2	13.7
6-Nov-18	931.6	13.7
7-Nov-18	929.9	13.7
8-Nov-18	930.7	13.7
9-Nov-18	930.2	13.7
10-Nov-18	929.4	13.7
11-Nov-18	928.9	13.7
12-Nov-18	928.3	13.7
13-Nov-18	927.1	13.7
14-Nov-18	926.4	13.7
15-Nov-18	925.9	13.7
16-Nov-18	925.2	13.7
17-Nov-18	924.9	13.7
18-Nov-18	924.9	13.7
19-Nov-18	923.1	13.7
20-Nov-18	921.2	13.6
21-Nov-18	920.1	13.6
22-Nov-18	918.6	13.6
23-Nov-18	916.6	13.6
24-Nov-18	915.5	13.6
25-Nov-18	914.1	13.6
26-Nov-18	913.9	13.6
27-Nov-18	912.4	13.6
28-Nov-18	911.2	13.6
29-Nov-18	912.7	13.6
30-Nov-18	911.5	13.6
Minimum	911.2	13.6
Maximum	937.9	13.7

Table 4 Summary of the Divers loggers downloaded data for the Reporting Period

Sample ID		Sep	Oct	Dec
		2018	2018	2018
GW1A	NW 60	X	X	X
GW1B	NW1 7.5	X	X	X
GW2A	NE 60	No data for this period		
GW2B	NE 17.5	X	X	X
GW3A	S 54	X	X	X
GW3B	S 17.5	X	X	X

